



# WET 2 DRY

## IMPORTANT!

For best results, go to  
[www.instyler.com.au](http://www.instyler.com.au) or  
[www.instyler.co.nz](http://www.instyler.co.nz)  
for Video Tips & Techniques



## USER MANUAL

InStyler® Wet 2 Dry Rotating Iron

## IMPORTANT SAFETY INFORMATION

**WARNINGS: TO REDUCE THE RISK OF SERIOUS INJURY, READ ALL INSTRUCTIONS AND WARNINGS COMPLETELY BEFORE USING THIS PRODUCT**

InStyler Wet 2 Dry Rotating Iron has been carefully engineered for both effectiveness and safety, however, basic safety precautions should always be followed when using any product, especially when children are present.

- **INSTYLER ROTATING IRON IS NOT INTENDED FOR USE BY CHILDREN.**
- **KEEP AWAY FROM WATER.**
- **DANGER** - As with most electrical appliances, electric parts are electrically live even when the switch is off. To reduce the risk of electric shock:
  1. **ALWAYS UNPLUG IT IMMEDIATELY AFTER USING.**
  2. **DO NOT USE WHILE BATHING OR SHOWERING.**
  3. **DO NOT** place or store InStyler Rotating Iron where it can fall or be pulled into a tub, toilet or sink or any other water source.
  4. **DO NOT** use InStyler Rotating Iron near water.
  5. **DO NOT** place in or drop into water or other liquid.
  6. If InStyler Rotating Iron falls into water, **DO NOT REACH INTO THE WATER!** Unplug it immediately.
  7. Unplug this appliance before cleaning it.

**WARNING: TO REDUCE THE RISK OF BURNS, FIRES, ELECTRICAL SHOCK, DEATH, INJURY OR DAMAGE TO PROPERTY:**

1. Counterfeit versions of the InStyler Rotating Iron do exist. To ensure you have purchased a genuine product, and to reduce the risk of burns, electrical shock and malfunctions, purchase from authorized dealers only.
2. Use InStyler Rotating Iron only for its intended use as described in this manual. **DO NOT** use attachments not recommended by the manufacturer.
- 2

3. **NEVER** operate the InStyler Rotating Iron if it has a damaged cord or plug, if it is not working properly, if it has been dropped or damaged or if it has been dropped into water. If the power supply cord or plug is damaged, the InStyler Rotating Iron must be replaced by the manufacturer or an authorized service agent in order to avoid a hazard.
4. Keep this product and the cord away from water and heated surfaces. **DO NOT** wrap the cord around the InStyler Rotating Iron until unit is completely cool.
5. This product has moving parts. Children and pets should be kept away when product is in use.
6. The InStyler Rotating Iron should **NEVER** be left unattended when plugged in.
7. **NEVER** use while sleeping.
8. **NEVER** drop or insert any object into any opening or hole on The InStyler Rotating Iron.
9. **DO NOT** operate outdoors or where aerosol (spray) products are being used or where oxygen is being administered.
10. **DO NOT** use an extension cord with the InStyler Rotating Iron.
11. The InStyler barrel and unit bottom may be hot during use. **DO NOT** allow eyes or skin to touch the heated surfaces.
12. **DO NOT** place InStyler on any unprotected surface while it is operating or cooling down after use, except for the InStyler carrier/mat, which has been provided.
13. **DO NOT** operate with a voltage converter.
14. This product is designed for hair styling. **DO NOT** use for any other purpose.
15. This product is a personal care device and is **NOT** intended for commercial use.
16. **DO NOT** use this product if any parts become damaged. Inspect the InStyler product prior to beginning hair styling to ensure all parts are secure in their place.

17. **DO NOT** subject this product to excessive force or shock that may result in malfunction, shorter life span or distorted parts.
18. **DO NOT** tamper with this product's components. Doing so may cause unnecessary damage. This product contains no user-serviceable parts.
19. **DO NOT** use liquid cleaners, aerosol cleaners, or any cleaner containing alcohol, detergent, abrasive or corrosive materials.
20. The InStyler Rotating Iron should be used only on clean hair.
21. **DO NOT** use the InStyler Rotating Iron if you are 12 years or younger.
22. An appliance should never be left unattended when it is plugged in.
23. Close supervision is necessary when this appliance is used by, on, or near children or individuals with certain disabilities or special needs.
24. Always store this appliance and cord in a moisture-free area. Do not store it in temperatures exceeding 140°F (60°C).
25. **DO NOT** plug or unplug this appliance when your hands are wet.
26. Hold the appliance with the display and stem vents facing away from your scalp.

**IMPORTANT:** The InStyler Rotating Iron should **NEVER** be used with any type of synthetic hair extension. The InStyler can be used on real human hair extensions **ONLY**, with the following precautions. If your real human hair extensions are sewn in, you can use your InStyler up to the scalp. If your real human hair extensions are glued in, make sure you start with your InStyler below the glue.

- **SAVE THESE INSTRUCTIONS**
- **KEEP THIS MANUAL IN A SAFE PLACE FOR FUTURE REFERENCE AND MAKE SURE ANYONE WHO USES THIS PRODUCT ALSO READS THIS MANUAL.**
- **READ ALL INSTRUCTIONS BEFORE USING YOUR INSTYLER ROTATING IRON. NO ASSEMBLY REQUIRED.**

The InStyler Rotating Iron is for household use only. The InStyler Rotating Iron has a polarized plug (one blade is wider than the other). As a safety feature, this plug will fit in a polarized outlet only one way. If the plug does not fully fit in the outlet, reverse the plug. If it still does not fit, contact a qualified electrician. **DO NOT** attempt to defeat this safety measure.

## Introduction and Getting Started

**CONGRATULATIONS!** You can now skip blow drying your hair and still get that amazing blowout look that you could never get with any other styling tool. The InStyler Wet 2 Dry dries hair by whisking water out of the hair strands, and then as the water travels up the rotating barrel, it is vented away safely and quickly. It does this as you style resulting in significantly less styling time!

### **“Go Slowly!”**

- The Wet 2 Dry InStyler is designed to help you save time blow drying your hair, but it shouldn't be used on completely wet hair. Towel dry the hair thoroughly, and begin with hair that is as dry as possible.
- Glide the InStyler Wet 2 Dry SLOWLY down the hair once to dry and once more to style.
- Listen for the crackle sound. That's the sound of water evaporating off the barrel, and it means that the InStyler Wet 2 Dry is working as it is supposed to.
- Experiment with it and be creative. You will quickly see what this innovative tool can do. The styling tips on the following pages will help give you some ideas of what is possible. You will become more efficient at styling your hair each time you use your InStyler.

## Top 4 Things You Must Know About Your InStyler Wet 2 Dry

- #1 Towel Dry. Try to get your hair as dry as possible with a towel before you begin.
- #2 One to Dry and One to Style. Glide the InStyler SLOWLY down your hair once to dry and once to style.
- #3 Go Slowly! The InStyler works best if you glide it through your hair slowly. Repeated passes should be unnecessary if you proceed slowly.
- #4 Listen for the Crackle! If you hear a little crackling, that means the moisture is evaporating properly from the barrel and not in your hair.

## Features InStyler Wet 2 Dry Rotating Iron

**30 Second  
Rapid Heat-up**

**Heated Rotating Barrel**  
Straightens, Curls and Polishes Hair

**32 or 19mm Barrel**  
Offers Volume,  
Curls and Flips

**195 °C Ceramic Heat**  
Salon Quality Results

**Air Intake Vents**

**Curved Smoothing  
Plate**

Automatically Aligns  
to Smooth Hair and  
Reduce Frizz, Without  
Crushing or Creasing.

**First Row of Bristles**  
Separates and Aligns Hair

**Second Row of Bristles**  
Adds Volume and Reduces Frizz

**Swivel Cord**

Automatic Safety Shut-Off | Voltage: 220~240/50W

32mm Power: 45W | 19mm Power: 38W

## Multiple Heat Settings:



### **HIGH**

3 Bars, 195 °C

Ideal for thick, coarse hair



### **MEDIUM**

2 Bars, 157 °C

Ideal for thin-to-medium textured hair



### **LOW**

1 Bar, 140 °C

Ideal for thin, fine hair



### **OFF**

No Bar(s)

**Towel Dry the hair thoroughly first.  
Hair can then be styled as normal on the  
appropriate heat setting while still damp.**

- The unit will start on "High."
- Press the Power button again to reduce heat.
- The LED bars will flash while reaching heat; once the temperature is reached, the LED bars will stay lit.

## Safety First - Using your Thermal Guard

*NOTE: It is recommended that you use your InStyler with the included Thermal Guard Training Aid, to help prevent burns while you are getting used to this unique new hot styling tool.*

### Attaching Your Thermal Guard Training Aid

1. Before attaching the Thermal Guard make sure the barrel of the unit is cool to touch.
2. To attach, snap the Thermal Guard Training Aid onto the side of the unit directly under the ring below the barrel.



3. Rotate the Thermal Guard Training Aid until tabs are seated in the indentations on the body of the InStyler, and the Thermal Guard Training Aid is facing out.
4. Once it is snapped in place, you can use your InStyler as you normally would.

### Removing Your Thermal Guard Training Aid

5. Before removing Thermal Guard make sure the barrel of the unit is cool to touch.
6. To remove the Thermal Guard Training Aid, firmly grab the Thermal Guard Training Aid, making sure the barrel of the unit is cool, **twist** to unseat it and pull to remove.

**NOTE:** It is important to keep your InStyler clean, as hair product build-up can accumulate on the barrel and bristles. With the unit unplugged, wipe the outside surface only with a lightly damp cloth. Bristles can be lightly scrubbed if necessary. Make sure the InStyler is completely dry before plugging into any power source. Please see page 19 of this manual for more detailed instructions on cleaning.

\*Always allow the InStyler Wet 2 Dry to cool before storing.



# The Basics - Preparation for all hair types.

- Before using your InStyler, you should always start with **clean hair**.
- You should also **detangle** first with a brush, and all sections should be combed out for optimal results and shine.
- Sections of hair to be styled should be no wider than the length of the InStyler barrel. We recommend starting with **3-7cm sections at a time** for whichever style you want to achieve.
- **Style the under layers of your hair first.** After under layers are completed, style your top layers.
- You may use any **salon quality** styling product with your InStyler, however we do not recommend the use of any oil-based products with your InStyler.
- For better hold, you can use your favorite light styling spray on each section of hair before using your InStyler.
- **Go Slowly!** The most important lesson is to glide the InStyler **slowly**. Don't worry if you see "steam" coming off of your hair when using your InStyler. This is not the result of any damage to the hair, it is simply excess moisture that is evaporating.

## Hair Types

The way you use your InStyler depends on what type of hair you have. You'll get the most out of your InStyler if you use the techniques best suited to your hair type.

### The four main types of hair are:

1. **Fine** - Set the InStyler at Low to Medium heat setting. With fine hair, you should only need 1 to 2 passes with the InStyler to achieve your desired results.
2. **Medium or Normal** - Set your InStyler to the Medium to High heat setting. You should only need 1 to 2 passes with the InStyler to achieve your desired results.
3. **Thick or Coarse** - Set your InStyler at the highest heat setting and style as desired. With coarse hair, 2 to 3 passes with the InStyler should be enough to set your style.
4. **Wet Hair (towel dry)** - For wet hair, use the appropriate heat setting to dry while styling.

**Don't rush! Remember to Take your time and move slowly through the hair.**

*NOTE: For color treated hair, we also recommend a lightweight shampoo and a light leave-in conditioner.*

- *Volumizing products can be used to hold the style.*
- *To hold your style, end with a professional light finishing spray.*
- *Although the InStyler uses less heat than other hair appliances, we recommend using thermal protectant products before use.*

## Sectioning Hair

To achieve the style you want with your InStyler, it is important to know how to properly **section the hair**.

- With longer hair, clip up the top layers of your hair, and then begin sectioning and styling your under layers of hair first.
- For best results, do not use fingers to gather each section of hair. You can gather a much “cleaner” section with a sectioning comb.
- Start with 3 to 7cm sections working around each side of the head to the nape of the neck. Use **small** sections of hair.
- When styling hair, grip the InStyler firmly but not too tightly. Let hair glide through it. **Let the InStyler do the work.**
- For straightening damp hair, glide the InStyler Wet 2 Dry once to dry then once more to straighten.

## Straightening

1. Section your hair using a sectioning comb.
2. Position the InStyler so the rotating barrel side is next to your scalp as illustrated in the picture.
3. Gently close the InStyler on your section of hair starting at the roots, and let the InStyler **slowly** glide straight down through the ends of your hair.
4. Go slowly to allow the InStyler enough time to be able to dry and style at the same time. For straightening damp hair, glide the InStyler Wet 2 Dry once to dry then once more to straighten.



◀ **TIP:** To straighten at the root, simply glide just the hot barrel over the root area (see illustration). Do not close the unit. Be cautious to avoid burning your scalp.

## Flip Out

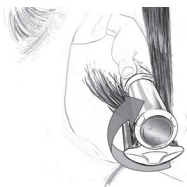
1. Gently close the InStyler onto the section of hair with the barrel positioned over the section of hair.
2. Slowly glide the InStyler down through the hair section from the roots to the ends. (see illustration)



3. Near the end of the hair section, rotate your wrist so the InStyler brush turns out away from your face. Allow the barrel to rotate 3 to 5 seconds in place on your ends before releasing the hair. (see illustration)

## Flip Under

1. Gently close the InStyler onto the section of hair with the barrel positioned under the hair section.
2. Slowly glide the InStyler down through the hair section from the roots to the ends. (see illustration)



3. Near the end of the hair section, rotate your wrist so the InStyler brush turns in towards your face. Allow the barrel to rotate 3 to 5 seconds in place on your ends before releasing the hair. (see illustration)

## Soft Curl

1. For the curling technique, you may find it easier to remove the Thermal Guard Training Aid while keeping in mind to be **cautious** and avoid burning your face or scalp. (See page 8 for Thermal Guard Training Aid removal instructions.)
2. Being careful to not burn your fingers, wrap a section of hair around the barrel of your InStyler from root to ends, with the barrel side facing your scalp (see illustration).
3. Gently close the InStyler onto the section of hair. Rotate your wrist slightly to ensure the ends of your hair are included.



4. Let the InStyler rotate for 5 to 10 seconds on each section of hair, then gently open the unit **letting the hair fall from the barrel.**
5. For tighter, more defined curls, you can let your InStyler rotate for a few seconds longer. Let hair cool completely before running fingers through to separate.

> **TIP:** When curling damp hair, let the barrel rotate a few seconds longer on the section than you would with dry hair.

## Volume Boost

To give your hair a boost of even more dramatic volume, you can try a technique called, "On Base Styling"

1. To begin, wrap a section of hair around the barrel down to the root.
2. Place the InStyler barrel directly over the root, close the unit and let the barrel rotate for a few seconds. (see illustration)

3. Open the InStyler and let the hair fall from the barrel. (see illustration)

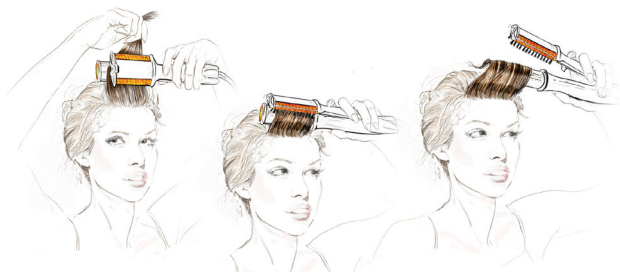
**DO NOT** loosen newly styled sections with fingers or comb until the hair is completely cool to the touch. This technique can be used anywhere you want an extra volume boost.



## InStyler Techniques - Advanced

### To create extra body and volume using the InStyler:

- With the InStyler barrel facing towards the back of the head, close the InStyler onto the section of hair, and slowly pull the InStyler in the opposite direction that you want your hair to lay. In other words, at the crown of your head, grab a section of hair with the InStyler and slowly pull the unit forward towards your forehead.
- To **boost the volume on the sides and back of the head**, gather a section of hair and push the InStyler upwards towards the crown of your head. Gently pull the InStyler through the ends of the section of hair. This technique gives extra body in the root area making hair look fuller. This technique can be used anywhere you need extra body, volume or height.
- For **additional height in your bangs**, wrap the bangs with the barrel towards your scalp and let the InStyler rotate for a few seconds directly over the root. Open the unit and let your bangs gently fall from the barrel.



## Frequently Asked Questions

### How do I use the InStyler as compared to my flat iron?

- A. The technique is similar in that you put your hair into the InStyler, you close it onto your hair, and then slowly move down the length of your hair. That is where the similarities end!! The rotating, heated, polishing barrel and bristles will do most of the work for you. Plus, you'll find that you can do much, much more with your InStyler than you could ever do with your flat iron.

### My hair is coming out frizzy when I use my InStyler. What am I doing wrong?

- A. **Go Slowly.** Towel dry the hair thoroughly first, then comb and detangle your hair as much as possible. Position the InStyler so that the barrel rotates with the direction of your hair. Also, keep in mind to put as little tension as possible on the barrel. This will help keep frizz to a minimum. If you're still not getting the desired results, you may need to dry hair a bit more before using the InStyler.

### Does the InStyler work on natural African American hair?

- A. Absolutely. You will get best results if your hair is combed and detangled first. The InStyler is a great tool for African American Hair because it will not leave crease marks like flat irons, and the polishing barrel and bristles will leave the hair looking shiny and beautiful. The InStyler is safe for any type of hair when used properly.

### Can I use styling products before or after I use my InStyler?

- A. You can use any salon quality product with your InStyler, although we do not recommend using any oil-based products on your hair beforehand. A professional thermal protectant spray can be applied to the hair before you style, as well as any professional firm-up or styling spray to help hold the style.

## Frequently Asked Questions

### **The InStyler doesn't seem to be working on my ends. Am I doing something wrong?**

- A. If you're having trouble styling the ends, try holding the InStyler there a little bit longer. The ends of the hair are normally the driest part of the hair, and can be a bit more difficult to style. It helps to use a good conditioner, especially on the ends to help infuse moisture. Also, if you have split ends, the hair may come out looking frizzy.

### **I see smoke coming from my hair! Is it burning my hair?**

- A. No! The InStyler Wet 2 Dry is not burning your hair. This is just a byproduct of evaporation.

### **Can I use my InStyler with real human hair extensions?**

- A. Yes. Make sure you start with your InStyler below where the extension is attached to your natural hair. Do not pull the InStyler through with any pressure, as you may pull out your extensions if not careful. **NEVER** use your InStyler with any synthetic hair extensions.

### **Can I use the InStyler Wet 2 Dry on already dry hair?**

- A. Of course! In fact, you may get even better results.

### **How does the InStyler Wet 2 Dry work?**

- A. The InStyler Wet 2 Dry dries hair by whisking water out of the hair strands, and then as the water travels up the rotating barrel, it is vented away safely and quickly. It does this as you style resulting in significantly less styling time.



# Product and Troubleshooting Questions

## What is the InStyler?

- A. The InStyler is a new hair styling tool that straightens, polishes and styles hair by means of a rotating heated barrel and brush bristles. This totally new design polishes the hair strands individually, creating amazing results that are much better than those they would have achieved using a flat iron, curling iron, or hot tool. The new design delivers great results without an extreme amount of heat or heavy styling products.

## How is the InStyler different than my flat iron?

- A. Simple: A flat iron compresses, mashes and then literally bakes your hair between two extremely hot plates. The InStyler's rotating polishing barrel gives your hair the heat it needs to help style and straighten. Since the barrel is constantly moving, it won't "press and bake" like a traditional flat iron. The InStyler also features a heated, floating plate between the two rows of brushes. The plate automatically adjusts, allowing the hair to have more consistent contact with the barrel, without having to grip the unit so tightly. The result is less frizz and smoother, shinier hair with no creasing. The polishing barrel allows the InStyler to actually use less heat than a flat iron delivering better results including perfect flips, curls and loads of luscious volume.

## I need a lot of heat to straighten my hair. Will the InStyler get hot enough?

- A. We get asked this question a lot, and we're very proud to say you can add this one to the old "hair styling myths" column! With the InStyler, you don't need a lot of heat to straighten and style your hair! The InStyler's unique design actually allows you to use less heat than you are used to, while still getting better results than you would with a flat iron or other hot tool. It's a totally new way of thinking about heat and your hair – you don't need the extreme heat to get the results you want. If you decide that you would like more heat, the InStyler has three different temperature settings.

**Can I use the InStyler to curl hair?**

- A. Absolutely! Simply by wrapping your hair around the rotating heated polishing barrel, and closing the InStyler, you can create great curls!

**The heated polishing barrel rotates. Can my hair get tangled?**

- A. No. The surface of the rotating heated polishing barrel is totally smooth, so your hair will not get tangled.

**What is the diameter of the heated barrel?**

- A. Your InStyler's heated barrel diameter is 32mm or 19mm.

**What are the bristles made of?**

- A. The bristles are made of heat resistant nylon.

**What is the power of the InStyler?**

- A. The 32mm InStyler is 220~240V, 50Hz and 45 Watts. The 19mm InStyler is 220~240V, 50Hz and 38 Watts.

**How do I turn the InStyler on?**

- A. Check to make sure your InStyler is plugged in. Press the Power button. The LED bars should light and begin flashing. Once the LED stops flashing the InStyler is ready to go. You must close the handle to begin the rotation.

**How do I get my InStyler to rotate?**

- A. You must close the handle to start the rotation. The rotation will start automatically.

**What if my InStyler does not heat?**

- A. Check to make sure your InStyler is plugged in. Press the Power button. The LED bars should light and start flashing. When the LED stops flashing the InStyler will be at the set temperature and ready to use.

### **When I use my InStyler, why does the temperature LED start to flash?**

- A. It is normal for the heat to fluctuate during use. As long as the InStyler has been allowed to reach full heat (steady LED) after powering on, you can continue to use your InStyler while it is flashing.

### **How do I clean my InStyler?**

- A. When cleaning your InStyler, disconnect it from the power source and make sure it has completely cooled. Wipe the outside surface only with a soft damp cloth. Be sure to wring out all excess water before applying it to the InStyler. Clean more severe dirt by using a soft, damp cloth with a mild soap. Bristles can be lightly scrubbed if necessary with a damp cloth to remove any built up product and any residual hair left in the bristles should be removed. The barrel can be wiped down with a soft, damp cloth. Use a mild soap if necessary. Make sure the InStyler is completely dry before plugging into any power source.

## ONE (1) YEAR LIMITED REPLACEMENT WARRANTY STATEMENT

**If your product becomes defective due to faulty material or workmanship within a period of 1 years from the date of purchase, we warrant to do the following:**

- **For New Zealand Consumers:** We will replace the product with a new product, free of charge, or repair the product at our cost, at our discretion.
- **For Australian Consumers:** Our goods come with guarantees that cannot be excluded under the Australian Consumer Law. You are entitled to a replacement or refund for a major failure and for compensation for any other reasonably foreseeable loss or damage. You are also entitled to have the goods repaired or replaced if the goods fail to be of acceptable quality and the failure does not amount to a major failure.

**Your warranty is subject to the following conditions:**

- **DO NOT** operate the appliance with a damaged plug or cord, or if the unit has been dropped, damaged or dropped in water. To avoid the risk of electric shock, do not disassemble or attempt to repair the appliance on your own. If the supply cord is damaged, **it must be replaced by a qualified electrician in order to avoid a hazard.** Incorrect re-assembly or repair can cause a risk of electric shock or injury to persons when the appliance is used.
- The item has not been misused, abused, neglected, altered, modified or repaired by anyone.
- The item has been subjected to fair wear and tear
- The item has not been used for trade, professional or hire purposes.
- The item has not sustained damage through foreign objects, substances or accident.

### **Your warranty does not cover:**

- Components that are subject to natural wear and tear caused by normal use in accordance with operating instructions.
- Unauthorised/improper maintenance/handling or overload is excluded from this warranty.
- For guarantee claims, you will need to submit a proof of purchase in the form of a valid receipt that displays date and place of purchase.

This warranty does not replace but is in addition to your statutory rights.

This warranty does not apply to accessories supplied with the item.

This warranty applies only to the original purchaser and may not be transferred.

Replacement items will be covered by the limited warranty for the balance of the warranty period from the date of the original purchase.

#### **Please note:**

Only the defective product or parts returned to place of purchase will be replaced under this warranty.

### **NEW ZEALAND CONTACT**

Brand Developers Limited  
Unit H, 686 Rosebank Road,  
Avondale 1026, Auckland, New Zealand  
Private Bag 93204, Parnell, Auckland 1151  
FAX: +64 9 306 8203

**NZ Customer Care: 0800 002 999**

### **AUSTRALIA CONTACT**

Brand Developers Aust Pty Ltd  
461 Plummer Street,  
PORT MELBOURNE, VIC 3207  
FAX: +61 3 9681 7825

**AUST Customer Care: 1800 890 840**



**WET 2 DRY**

**Join our community for updated tips,  
tricks, videos, and special product offers.**



**[www.instyler.com.au](http://www.instyler.com.au)  
[www.instyler.co.nz](http://www.instyler.co.nz)**

©2013 Tré Milano, LLC. All Rights Reserved.

InStyler® and InStyler® logo are registered trademarks of Tré Milano, LLC.

Illustrations by Renee Reeser Zelnick