

Shark®

OWNER'S GUIDE

SC660NZ



IMPORTANT SAFETY INSTRUCTIONS

For Household Use Only

WHEN USING YOUR **SHARK®** PORTABLE STEAM CLEANER, BASIC SAFETY PRECAUTIONS SHOULD ALWAYS BE FOLLOWED, INCLUDING THE FOLLOWING:

WARNING: READ ALL INSTRUCTIONS BEFORE USING YOUR PORTABLE STEAM CLEANER.



DANGER OF SCALDING

Please use caution when using the steam bottle directly or with the hose and tool attachments. The steam emitted is very hot.

IMPORTANT:

This appliance is not intended for use by persons (including children) with reduced physical, sensory or mental capabilities or lack of experience and knowledge, unless they have been given supervision or instruction concerning use of the appliance by a person responsible for their safety. Children should be supervised to ensure that they do not play with the appliance.

WARNING: Your portable steam cleaner is designed to clean hard surfaces that will withstand high heat. Do not use on unsealed wood or unglazed ceramic surfaces. On surfaces that have been treated with wax the sheen may be removed by the heat and steam action. It is always recommended to test an isolated area of the surface to be cleaned before proceeding. We also recommend that you check the use and care instructions for the surface that you are cleaning.

WARNING:

TO REDUCE THE RISK OF FIRE, ELECTRIC SHOCK OR INJURY:

1. **USE THE SYSTEM ONLY FOR ITS INTENDED USE AS DESCRIBED IN THIS MANUAL.**
2. **ONLY USE WATER.** To extend the life of your portable steam cleaner, we recommend using distilled water. If you live in an area with hard tap water, we recommend using distilled water.
3. **DO NOT** add cleaning solutions, scented perfumes, oils, or any other chemicals to the water used in this appliance as this may damage the unit or make it unsafe for use. Use of any substances other than manufacturer's recommended accessories will automatically void your warranty.
4. **DO NOT** use outdoors.
5. **DO NOT** leave the appliance unattended when plugged in.
6. Always unplug the power cord from the electrical outlet when not in use, when filling the water tank and before servicing.
7. **DO NOT** allow to be used by children. Close attention is necessary when used by or near children, pets or plants.
8. **DO NOT** put any objects into openings or operate with any opening blocked.
9. **DO NOT** use on leather, wax polished furniture or floors, painted surfaces, synthetic fabrics, velvet, or other delicate, steam sensitive materials.
10. Carefully remove the all purpose scrubber pad immediately after you have unplugged and allowed the portable steam cleaner to cool.

11. Always unplug and allow the portable steam cleaner to cool before removing cleaning fabric or changing cleaning tools and hose.
12. **NEVER** store the appliance with a damp/wet scrubbing pad attached. If left in a single spot for a period of time with a damp/wet scrubbing pad attached, the moisture may cause surface damage.
13. When cleaning the portable steam cleaner, unplug the power cord and clean with a dry or damp cloth. Do not pour water or use alcohol, benzene or paint thinner on the unit.
14. **NEVER** use the flat scrubber tool without the all purpose scrubbing pad attached.
15. To protect against a risk of fire, electric shock, or injury:
 - a. To avoid circuit overload, **DO NOT** operate another appliance on the same socket (circuit) as the portable steam cleaning system.
 - b. **DO NOT** immerse any part of the system in water or other liquids.
 - c. Liquid or steam must not be directed towards equipment containing electrical components, such as the interior of ovens.
 - d. **DO NOT** pull power cord to disconnect from outlet; instead, grasp plug and pull to disconnect.
 - e. **DO NOT** use extension cords or outlets with inadequate current carrying capacity.
 - f. **DO NOT** operate the appliance with a damaged plug or cord, or if the unit has been dropped or damaged. To avoid the risk of electric shock, do not disassemble or attempt to repair the appliance on your own. If the supply cord is damaged, it must be replaced by a qualified electrician in order to avoid a hazard. Incorrect re-assembly or repair can cause a risk of electrical shock or injury to persons when the appliance is used.
- g. **DO NOT** disassemble or attempt to repair the steam cleaner. Incorrect reassembly or repair can cause a risk of electrical shock or injury to persons when the steam cleaner is used.
- h. **DO NOT** handle plug or portable steam cleaner with wet hands or operate without shoes.
- i. **DO NOT** pull or carry by power cord, power cord as a handle, close a door on the power cord, or pull the power cord around sharp corners or edges.
- j. **DO NOT** allow power cord to touch hot surfaces.
- k. **ALWAYS** disconnect system from electrical outlet when filling with water or emptying and when not in use.
- l. **NEVER** attempt to fill this unit under a water faucet. Always use the filling flask that is provided.
- m. **NEVER** turn the appliance over or on its side when in use.
- n. **NEVER** aim or direct steam towards people, animals, or plants. The steam is very hot and can cause burns. Burns can occur from touching hot metal parts, hot water, steam or scrubbing pads.
- o. **DO NOT** operate the steam cleaner while under the influence of drugs, alcohol or medications.
- p. **DO NOT** operate in the presence of explosive and/or flammable fumes.
- q. Store your appliance indoors in a cool, dry area.
- r. Keep your work area well lit.
- s. Let the system cool completely before putting away. Wrap cord loosely around system when storing, using the cord clip to secure.
- t. Keep out of the reach of children.

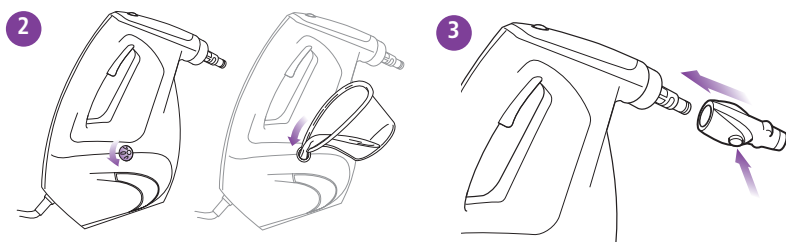
SAVE THESE INSTRUCTIONS

Quick Start

Your **Shark®** portable steam cleaner is designed to clean surfaces that will withstand high heat and moisture. Do not use on unsealed wood surfaces (especially wooden antique furniture), unglazed ceramic tile, painted surfaces or surfaces that have been treated with wax, oils, varnishes, or shellac. The sheen may be removed by the heat, steam, and friction of the cleaning tools. Lacquer and polyurethane coatings provide a hard durable protective finish that withstands moisture but it is always recommended to test an isolated area of the surface to be cleaned before proceeding. We also recommend you check the use and care instructions from the surface manufacturer.

When cleaning finished wood surfaces, use broad, continuous cleaning strokes. To prevent surface damage, avoid focusing steam or allowing the cleaning tools to sit in one spot for any amount of time.

When assembling your portable *steam cleaner*, there may be a little water in the water tank. This is because we test all our portable *steam* cleaning systems 100% before you buy them, so you get a quality **Shark®** steam product.



ASSEMBLY

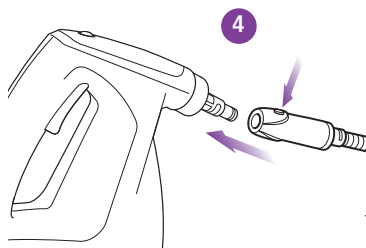
- 1 Safely remove contents of the portable steam cleaner cleaning system and lay them out on a flat surface to see that you have all the components to complete the assembly. (Refer to page 2.)

FILL

- 2 Turn the water tank cap anti clockwise and remove to fill, using the filling flask provided. Be careful not to overfill. Replace the cap by turning clockwise. The water tank does not have to be completely full for the steam bottle to generate steam. Steam will stop when the water tank is empty. You can refill at any time.

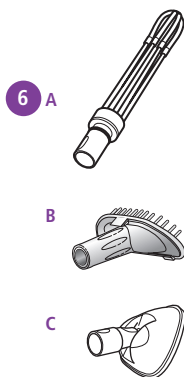
DIRECT SPRAY STEAM BOTTLE USE

- 3 Attach the concentrator nozzle by pressing the lock release buttons on the concentrator nozzle and slide onto the Steam Bottle nozzle. Press in and turn clockwise until the concentrator nozzle clicks into place.



ATTACHING HOSE

- 4 Attach the hose connector by pressing the lock release buttons on the accessory hose and slide onto the Steam Bottle nozzle. Press in and turn clockwise until it clicks into place.
- 5 Select the desired cleaning tool for use. Follow the cleaning tool sub assembly Instructions for the selected tool.



CLEANING TOOL ASSEMBLY

- 6A Press fit the **cylinder tool** onto the accessory hose handle.
- 6B Press fit the **garment steamer diffuser** onto the accessory hose handle.
- 6C Press fit the **flat scrubbing tool** onto the accessory hose handle. Attach one of the scrubbing pads onto the scrubbing tool.

THIS MANUAL COVERS MODEL NUMBER:

SC660NZ 11

TECHNICAL SPECIFICATIONS

Voltage: 220-240V., 50Hz.

Power: 1550 Watts

Water Capacity: 450 ml (15 fl. oz.)



Z854
SAA122030

IPX4

Contents

Thank you for
purchasing the
Shark® Portable
Steam Cleaning
System.

GETTING STARTED	2
USING YOUR PORTABLE STEAM CLEANER	4
CARE OF YOUR PORTABLE STEAM CLEANER	8
TROUBLESHOOTING GUIDE	9

Getting Started

Your **Shark®** portable steam cleaner is designed to clean surfaces that will withstand high heat and moisture. Do not use on unsealed wood surfaces (especially wooden antique furniture), unglazed ceramic tile, painted surfaces or surfaces that have been treated with wax, oils, varnishes, or shellac. The sheen may be removed by the heat, steam, and friction of the cleaning tools. Lacquer and polyurethane coatings provide a hard durable protective finish that withstands moisture but it is always recommended to test an isolated area of the surface to be cleaned before proceeding.

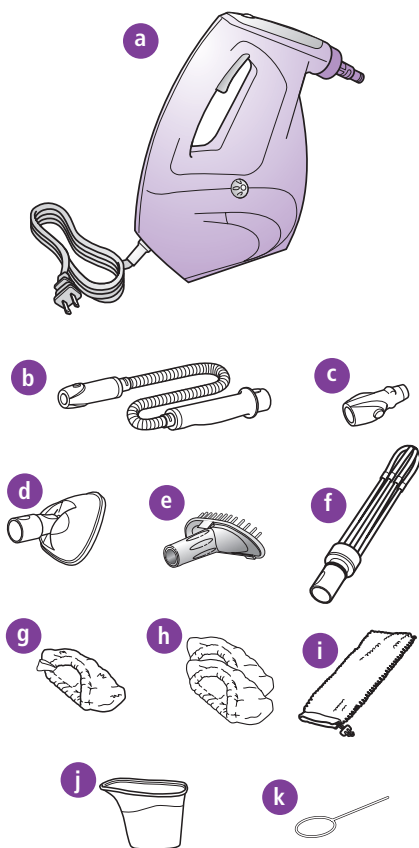
We also recommend you check the use and care instructions from the surface manufacturer.

When cleaning finished wood surfaces, use broad, continuous cleaning strokes. To prevent surface damage, avoid focusing steam or allowing the cleaning tools to sit in one spot for any amount of time.

When assembling your portable steam cleaner, there may be a little water in the water tank. This is because we test all our portable steam cleaning systems 100% before you buy them, so you get a quality **Shark®** steam product.

FIRST THINGS FIRST, YOU NEED TO KNOW WHAT'S IN THE BOX YOU JUST OPENED:

- a Steam Bottle
- b Accessory Hose
- c Steam Concentrator Nozzle
- d Flat Scrubber Tool
- e Garment Steamer with Bristle Brush
- f Cylinder Tool
- g All-Purpose Scrubber Pad for Flat Scrubber Tool
- h Garment Steamer Bonnet and Upholstery Bonnet
- i All-Purpose Cylinder Cleaning Pocket
- j Filling Flask
- k Nozzle Cleaner



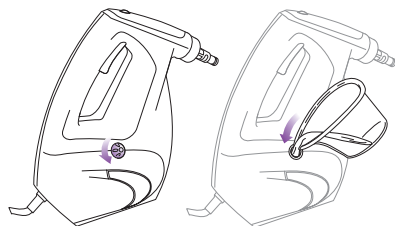


fig. 1

ASSEMBLY & USE INSTRUCTIONS

- 1 Safely remove contents of the portable steam cleaner cleaning system and lay them out on a flat surface to see that you have all the components to complete the assembly.
- 2 READ ALL INSTRUCTIONS BEFORE USING YOUR PORTABLE STEAM CLEANER.
- ⚠ **IMPORTANT:** Always make sure the steam bottle is **UNPLUGGED** from the electrical outlet when not in use. Never fill the water reservoir when the unit is plugged in.
- 3 Only use water. To extend the life of your portable steam cleaner, we recommend using distilled water. If you live in an area with hard tap water, we recommend using distilled water.
- 4 Do not add cleaning solutions, scented perfumes, oils, or any other chemicals to the water used in this appliance as this may damage the unit or make it unsafe for use. Use of any substances other than manufacturer's recommended accessories will automatically void your warranty.

FILLING AND REFILLING THE WATER TANK

- 1 Never fill the steam bottle while plugged into an electrical outlet.
- 2 Disconnect the power cord before filling the water tank.
- 3 Turn the water tank cap anti clockwise and remove to fill, using the filling flask provided. Be careful not to overfill. Replace the cap by turning clockwise. (**fig. 1**)

Using Your Portable Steam Cleaner

DIRECT SPRAY STEAM BOTTLE USE

Cleaning Tip: Direct steam spray for cleaning hard to reach nooks & crannies and stubborn sticky messes where focused steam power may be needed. Direct steam spray can loosen and dislodge compact dirt often found in corners and tight places where traditional methods and cleaning tools tend to push dirt into, making it difficult to reach and clean. Spray direct steam and wipe clean with a cleaning cloth.

CAUTION: Direct steam spray temperature is extremely hot closest to the nozzle and can damage surfaces if held directly focusing in one spot too long. Be sure to constantly move and adjust the steam spray to avoid causing damage.

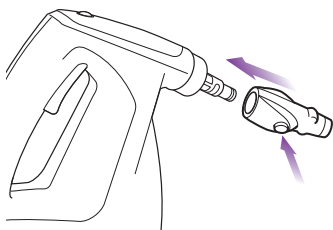


fig. 2

- 1 To attach the Concentrator Nozzle, press the lock release buttons on the concentrator nozzle and slide onto the Steam Bottle nozzle. Press in and turn clockwise until the concentrator nozzle clicks into place. **(fig. 2)**
- 2 To remove the Concentrator Nozzle, press the lock release buttons and slide it out.

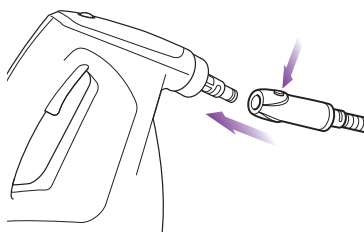


fig. 3

- 1 To attach the accessory hose, press the lock release buttons on the accessory hose and slide onto the Steam Bottle nozzle. Press in and turn clockwise until it clicks into place. **(fig. 3)**
- 2 To remove the accessory hose, press the lock release buttons in and slide out.
- 3 Select the desired cleaning tool for use. Follow the cleaning tool sub assembly instructions for the selected tool.

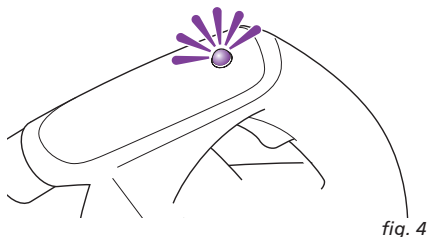


fig. 4

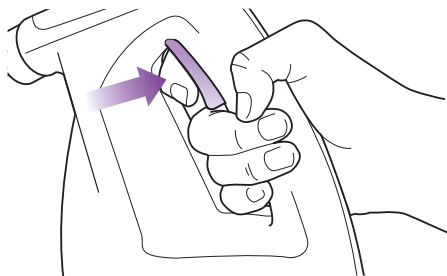


fig. 5

! IMPORTANT: Once plugged in, the Blue LED will illuminate, and your portable steam cleaner cleaning system will be ready to use within 30-45 seconds. (fig. 4)

! WARNING: Your portable steam cleaner is designed to clean surfaces that will withstand high heat and moisture. Do not use on unsealed wood surfaces (especially wooden antique furniture), unglazed ceramic tile, or surfaces that have been treated with wax, oils, varnishes, or shellac. The sheen may be removed by the heat, steam, and friction of the cleaning tools. Lacquer and polyurethane coatings provide a hard durable protective finish that withstands moisture but it is always recommended to test an isolated area of the surface to be cleaned before proceeding.

We also recommend you check the use and care instructions from the surface manufacturer.

NOTE: Make sure surfaces are free of crumbs and debris before using the portable steam cleaner.

GENERATING STEAM

- 1 Plug the unit in and wait about 30 to 45 seconds then press and hold the steam trigger to activate the pump. You will immediately hear steam generating and begin to see visible results either from the nozzle or the attached cleaning tool. It is recommended that you wait at least 30 seconds before pulling the trigger as this will minimise water spitting. (fig. 5)
- 2 Once you release the steam trigger, the pump will stop delivering water to the boiler and the steam will reduce to a stop when the boiler becomes empty.

! CAUTION: Steam is hot and can cause burns, so please use with caution.

Using Your Portable Steam Cleaner with Flat Scrubber

Cleaning Tip: The Flat Scrubber is designed for cleaning a variety of surfaces and is exceptional on those that are large and flat including counter tops, table tops, walls mirrors, windows, stairs, shelves and other similar surfaces. Super absorbent bonnet loosens, lifts, and locks in dirt and grime while sanitising at the same time.

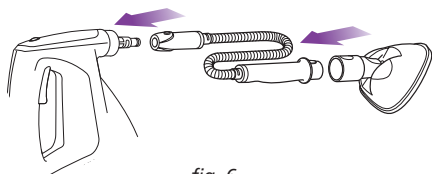


fig. 6

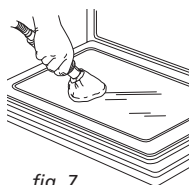


fig. 7



fig. 8

- 1 To attach the All-Purpose Scrubber Pad, place the pad exterior side down on a flat surface (lavender tab indicates the bottom of the pad) and insert the top of the Flat Scrubber Tool into the top portion of the pad and then pull the pad over each side of the back edge.
- 2 Press the Flat Scrubber Tool onto the Accessory Hose until it clicks into place. (fig. 6)
- 3 Hold down the steam trigger to start steaming. (fig. 7)
- 4 To remove the Flat Scrubber Tool, press and hold down the Accessory Hose release button. Then slide out the Flat Scrubber Tool. (fig. 8)

CAUTION: Do not press the steam trigger while attaching or removing the Flat Scrubber Tool.

CAUTION: Do not use the Flat Scrubber Tool without the All-Purpose Scrubber Pad attached.

Using Your Portable Steam Cleaner with Garment Steamer

Cleaning Tip: For freshening upholstery and removing wrinkles from clothing, fabrics, and drapes.

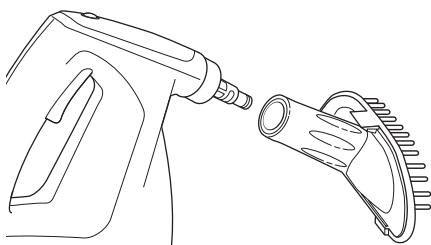


Fig. 9

CAUTION: Always determine the colour fastness of any fabric, especially with reds or blues. Take a clean, moist and warm towel then gently rub a small, discrete area of the fabric. If the colour bleeds onto the towel, you may need to have the piece professionally cleaned.

- 1 Press fit the garment steamer onto the bottle nozzle.
- 2 For garment steaming, stretch the garment steamer bonnet over the garment steamer diffuser.
- 3 For garment brush, attach directly onto the garment steamer diffuser by aligning the bottom of the diffuser with the back of the garment brush attachment. Gently push the top of the garment brush up into place over the bonnet until the attachment snaps into place. (Fig. 9)

Note: It is recommended that the bonnet be used at all times to achieve a dry steam, thus preventing condensation.

Using Your Portable Steam Cleaner with Cylinder Tool

Cleaning Tip: The Cylinder Cleaning Tool provides controlled cleaning and reaches into narrow areas and around curved and contoured surfaces for steam dusting and fine cleaning activities. It is a great cleaning tool for in and around sinks, bathtubs, refrigerator doors, window sills, door jams and frames, exhaust and intake vents, banisters, railings, spindles, furniture, seating and more.

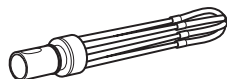


fig. 10



fig. 11

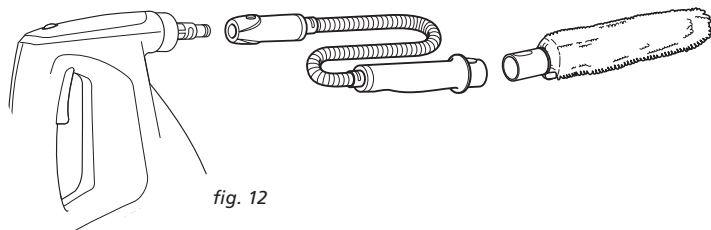


fig. 12

- 1 Slide the Cylinder Cleaning Pocket over the Cylinder Cleaning Tool frame until it is completely on. (fig. 10)
 - 2 Close the cinch by pulling on the elastic band and sliding the locking bean to tighten. (fig. 11)
 - 3 Attach the Cylinder Cleaning Tool by snapping into the handle of the Accessory Hose .(fig. 12)
 - 4 Press and hold the steam trigger to create steam.
 - 5 To remove the Cylinder Cleaning Tool, press and hold down the Accessory release button. Then slide out the Cylinder Cleaning Tool.
- CAUTION:** Do not press steam trigger while attaching or removing the Cylinder Cleaning Tool. Always use the Cylinder Cleaning Tool with Bonnet attached.

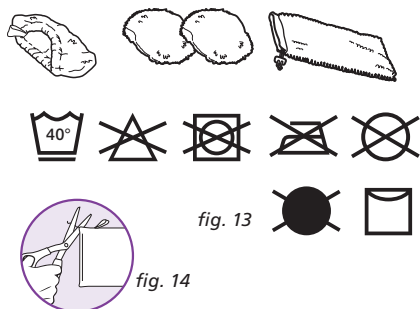
Care of Your Portable *Steam Cleaner*

STORAGE

- 1 Let the appliance cool down before cleaning or storing.
- 2 Turn the water tank cap anti clockwise and remove the cap. Tilt the unit and pour any remaining water in to the sink or water tight container. Replace the cap by turning clockwise. Empty the water tank after each use.
- 3 Store in a cool dry location.

CLEANING THE STEAM BOTTLE

- 1 A periodic rinse of your steam cleaner will help free it from normal water deposits. This is recommended every 10-15 fillings to free up any scale deposit. Fill the reservoir with water and secure the cap. Shake vigorously for approximately 10-15 times and remove the cap to empty the reservoir.



CARE OF YOUR SCRUBBING PADS

- 1 We recommend washing your scrubbing pad separately from other fabrics to avoid picking up lint. **Only use liquid detergent (no powder detergent). Do not use any fabric softeners or bleach.** Line dry. Do not tumble dry. (fig. 13)
- 2 If there are loose threads on the cleaning pad carefully cut the thread with scissors. Do not pull on them or cut at the base.(fig. 14)

! IMPORTANT: The scrubbing pad may be very hot from the steam. Use caution when removing. Let the unit cool for 2-3 minutes.

DECALCIFYING YOUR STEAM MOP

Calcium and mineral deposits can build up and impact the performance of your steam mop over time. To extend the life of your product we recommend that you use distilled water.

Cleaning tip: *To prevent clogging, it is recommended that you periodically clean the Concentrator Nozzle and the Accessory Hose stem with the cleaning tool provided or a paper clip.*

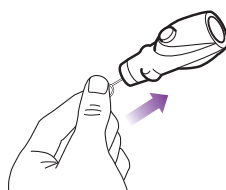


fig. 15

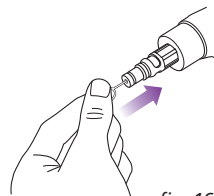


fig. 16

CLEANING THE NOZZLES

- 1 Your portable steam cleaner should not normally require cleaning, however, should you notice a decrease in the steam output, it may be necessary to remove mineral deposits built up around the nozzles.
- 2 Unplug the cleaner from the electrical outlet.
- 3 Use the provided nozzle cleaner or a small diameter stiff metal wire, such as a straightened metal paperclip, and carefully insert the end of the wire into the nozzle orifice. (fig. 15, fig. 16)
- 4 Move the wire back and forth several times to remove any deposits.
- 5 Plug in the appliance to the power outlet and test to note steam output.

Trouble Shooting Guide

PROBLEM	POSSIBLE REASONS	SOLUTIONS
There is no steam.	<p>The Steam Bottle is not plugged in.</p> <p>There is not enough water in the unit.</p>	<p>Verify that the Blue light is on and the product is plugged in correctly into a working outlet.</p> <p>Fill the steam bottle tank.</p>
There is not enough steam.	<p>Mineral build-up may be clogging the nozzle.</p> <p>Water level may be low.</p>	<p>Using the nozzle cleaner, carefully clean the nozzle to remove debris.</p> <p>Fill the steam bottle tank.</p>
The scrubbing pads are streaking or leaving dirt behind.	<p>The all purpose scrubbing pads may be dirty and need to be replaced or washed.</p> <p>The all purpose scrubbing pad may be worn.</p>	<p>Replace with a clean scrubbing pad.</p> <p>Replace as needed.</p>
The cleaning tool handles keep falling off the hose.	<p>The connection may not be secure.</p>	<p>Check the connection, making sure you are pressing in and turning at the same time.</p>

Notes

[illegible]

Notes

This image shows a blank sheet of white paper with horizontal ruling lines. The lines are evenly spaced and run across the width of the page. There are no margins, text, or other markings on the paper.

Notes

This image shows a single sheet of white paper with horizontal ruling lines. The lines are evenly spaced and run across the width of the page. There are no margins, text, or other markings on the paper.

ONE (1) YEAR LIMITED REPLACEMENT WARRANTY STATEMENT

If your product becomes defective due to faulty material or workmanship within a period of 1 year from the date of purchase, we warrant to do the following:

- **For New Zealand Consumers:** We will replace the product with a new product, free of charge, or repair the product at our cost, at our discretion.
- **For Australian Consumers:** Our goods come with guarantees that cannot be excluded under the Australian Consumer Law. You are entitled to a replacement or refund for a major failure and for compensation for any other reasonably foreseeable loss or damage. You are also entitled to have the goods repaired or replaced if the goods fail to be of acceptable quality and the failure does not amount to a major failure.

Your warranty is subject to the following conditions:

- **DO NOT** operate the appliance with a damaged plug or cord, or if the unit has been dropped, damaged or dropped in water. To avoid the risk of electric shock, do not disassemble or attempt to repair the appliance on your own. If the supply cord is damaged, **it must be replaced by a qualified electrician in order to avoid a hazard.** Incorrect re-assembly or repair can cause a risk of electrical shock or injury to persons when the appliance is used.
- The product has not been misused, abused, neglected, altered, modified or repaired by anyone.
- The product has been subjected to fair wear and tear.
- The product has not been used for trade, professional or hire purposes.
- The product has not sustained damage through foreign objects, substances or accident.

Your warranty does not cover:

- Components that are subject to natural wear and tear caused by normal use in accordance with operating instructions.
- Unauthorised/improper maintenance/handling or overload is excluded from this warranty.
- For guarantee claims you will need to submit a proof of purchase in the form of a valid receipt that displays date and place of purchase.

This warranty does not replace but is in addition to your statutory rights.

This warranty does not apply to accessories supplied with the product.

This warranty applies only to the original purchaser and may not be transferred.

Replacement products will be covered by the limited warranty for the balance of the warranty period from the date of the original purchase.

Please note:

Only defective product or parts returned to place of purchase will be replaced under this warranty.

New Zealand Contact:

Brand Developers Limited
Unit H, 686 Rosebank Road,
Avondale 1026, Auckland, New Zealand
Private Bag 93204, Parnell, Auckland 1151
FAX: +64 9 306 8203
NZ Customer Care 0800 002 999

Australia Contact

Brand Developers Aust Pty Ltd
461 Plummer Street,
PORT MELBOURNE, VIC 3207
FAX: +61 3 9681 7825
AUST Customer Care: 1800 890 840

Distributed by:

Brand Developers Aust Pty Ltd

461 Plummer Street

PORT MELBOURNE, VIC 3207

FAX: +61 3 9681 7825

AUST Customer Care: 1800 890 840



Brand Developers Ltd

Unit H, 686 Rosebank Road,

Avondale, 1026 Auckland,

NEW ZEALAND

FAX: +64 9 306 8203

NZ Customer Care: 0800 002 999



Printed in China

Illustrations may differ from actual product.

SC660NZ.E.121015.1



Z854

SAA122030 IPX4