

Shark[®]

ROTATOR[™]

OWNER'S GUIDE

NV340ANZ

SLIM-LIGHT
Lift-Away[™]



Thank you for purchasing the Shark® Rotator™ Slim Lift-Away™ Vacuum.

This Owner's Guide is designed to help you get a complete understanding of your new vacuum cleaner. Please read it carefully and keep it for future reference.

For a list of what is included with this model, refer to inside flap of box.

If you should have a question about your Shark® Rotator™, please call AUST: 1800 890 840 or NZ: 0800 002 999.

THANK YOU!

REGISTER YOUR PURCHASE:

☎ AUST: 1800 890 840
☎ NZ: 0800 002 999

RECORD THIS INFORMATION:

Model Number: _____
Date of Purchase (Keep receipt):

TECHNICAL SPECIFICATIONS:

Voltage: 220-240V~, 50/60Hz
Watts: 750W
Power Nozzle: 80W

RECOMMENDED FILTER CLEANING SCHEDULE:

See the MAINTENANCE section for filter cleaning instructions

Foam/Felt Filter Kit:	1229FC340	Every 3
HEPA Filter:	XH340	Every 12 months



GMA-102233-EA-007



IMPORTANT SAFEGUARDS

When using an electrical appliance, basic safety precautions should always be observed, including the following:

WARNING

This appliance is not intended for use by persons with reduced physical, sensory or mental capabilities, or lack of experience and knowledge, unless they have been given supervision or instruction concerning use of the appliance by a person responsible for their safety.

Children shall not use or play with this appliance. Close supervision is necessary to keep appliance out of reach of children during use.

WARNING

TO REDUCE THE RISK OF FIRE, ELECTRIC SHOCK OR INJURY:

- 1 DO NOT use outdoors or on wet surfaces.
- 2 Unplug from electrical outlet when not in use and before cleaning or servicing.
- 3 DO NOT use with damaged cord or plug. Contact Customer Service or Service Center for the repair or replacement of the line cord.
- 4 DO NOT use if the appliance is not working, has been dropped, dropped into water, damaged or left outdoors.
- 5 NO SERVICEABLE PARTS. Incorrect re-assembly or repair can cause a risk of electrical shock or injury to persons when the appliance is used. Contact Customer care.
- 6 DO NOT pull or carry vacuum cleaner by the cord or use the cord as a handle.
- 7 DO NOT unplug by pulling on cord; to unplug, grasp the plug, not the cord.
- 8 DO NOT handle plug or vacuum cleaner with wet hands.
- 9 DO NOT run the vacuum cleaner over the power cord, close a door on the cord or pull cord around sharp corners.
- 10 The use of an extension cord is not recommended.
- 11 DO NOT leave vacuum cleaner when plugged in.
- 12 Keep cord away from heated surfaces.
- 13 Turn off all controls before plugging or unplugging the vacuum cleaner.
- 14 Always turn off the vacuum cleaner before connecting or disconnecting power nozzle.



CAUTION: Power nozzle contains electrical connections and the power nozzle is not a serviceable part.

- 15 Store your vacuum cleaner with the power cord secured around the two cord holders - as shown in the storage instructions.

GENERAL USE

- 16 Use only as described in this manual.

- 17 DO NOT put any objects into openings. DO NOT use with any opening blocked; keep free of dust, lint, hair, and anything that may reduce air flow.
- 18 Keep your work area well lit.
- 19 Keep the vacuum cleaner moving over the carpet surface at all times to avoid damaging the carpet fibers.
- 20 DO NOT place vacuum cleaner on unstable surfaces such as chairs or tables.
- 21 DO NOT use without dust cup and/or filters in place.

HOSE ATTACHMENTS

- 22 DO NOT use if air flow is restricted; if the air paths, the hose, or the accessories become blocked, turn the vacuum cleaner off. Remove all obstructions before you turn on the unit again.
- 23 Keep the end of the hose and accessory openings away from face and body.
- 24 Keep cleaning tools and hose suction openings away from hair, face, fingers, uncovered feet, or loose clothing.
- 25 Only use manufacturer's recommended attachments.

DUST CUP/FILTERS/ACCESSORIES

Before turning on the vacuum:

- 26 Make sure that all filters are thoroughly dry after routine cleaning.
- 27 Make sure that dust cup and all filters are in place after routine maintenance.
- 28 Make sure accessories are free of blockages.
- 29 Use only manufacturer's recommended accessories and replacement parts.

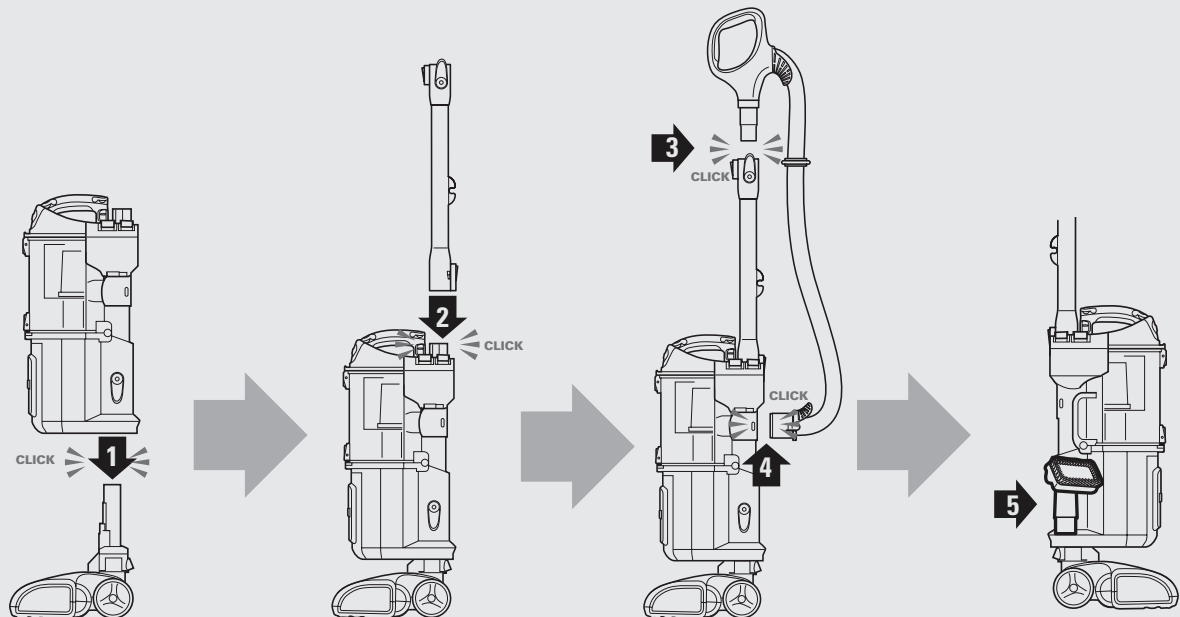
GENERAL CLEANING

- 30 DO NOT pick up large-sized objects.
- 31 DO NOT pick up hard or sharp objects such as glass, nails, screws or coins that could damage the vacuum cleaner.
- 32 DO NOT pick up smoking or burning objects such as hot coals, cigarette butts, or matches.
- 33 DO NOT pick up flammable or combustible materials such as lighter fluid, gasoline, or kerosene or use vacuum in areas where they may be present.
- 34 DO NOT pick up toxic solutions such as chlorine bleach, ammonia, or drain cleaner.
- 35 DO NOT use in an enclosed space where vapors are present from paint, paint thinner, moth-proofing substances, flammable dust or other explosive or toxic materials.
- 36 DO NOT vacuum up any liquids.
- 37 DO NOT immerse vacuum cleaner in water or other liquids.
- 38 DO NOT use outdoors or on wet surfaces; use only on dry surfaces.
- 39 Use extra care when cleaning on stairs.

SAVE THESE INSTRUCTIONS

ASSEMBLY

- 1 Place the vacuum body onto floor nozzle.
- 2 Insert the wand into top of the vacuum.
- 3 Insert the handle into the top of the wand.
- 4 Insert the hose into the hose connector.
- 5 Insert the dusting brush into the accessory holder as shown.



⚠ WARNING: When vacuuming fine dust (sawdust, sand, flour, talcum powder, etc.) electrostatic charges build up naturally. Under certain conditions these electrostatic charges will be released. To avoid the unpleasant effects of static discharges, a metal strip has been incorporated into the right side of the handle. **PLEASE MAKE SURE THAT YOU KEEP YOUR HAND IN CONSTANT CONTACT WITH THIS METAL STRIP DURING VACUUMING.**

INCORRECT



CORRECT



OR

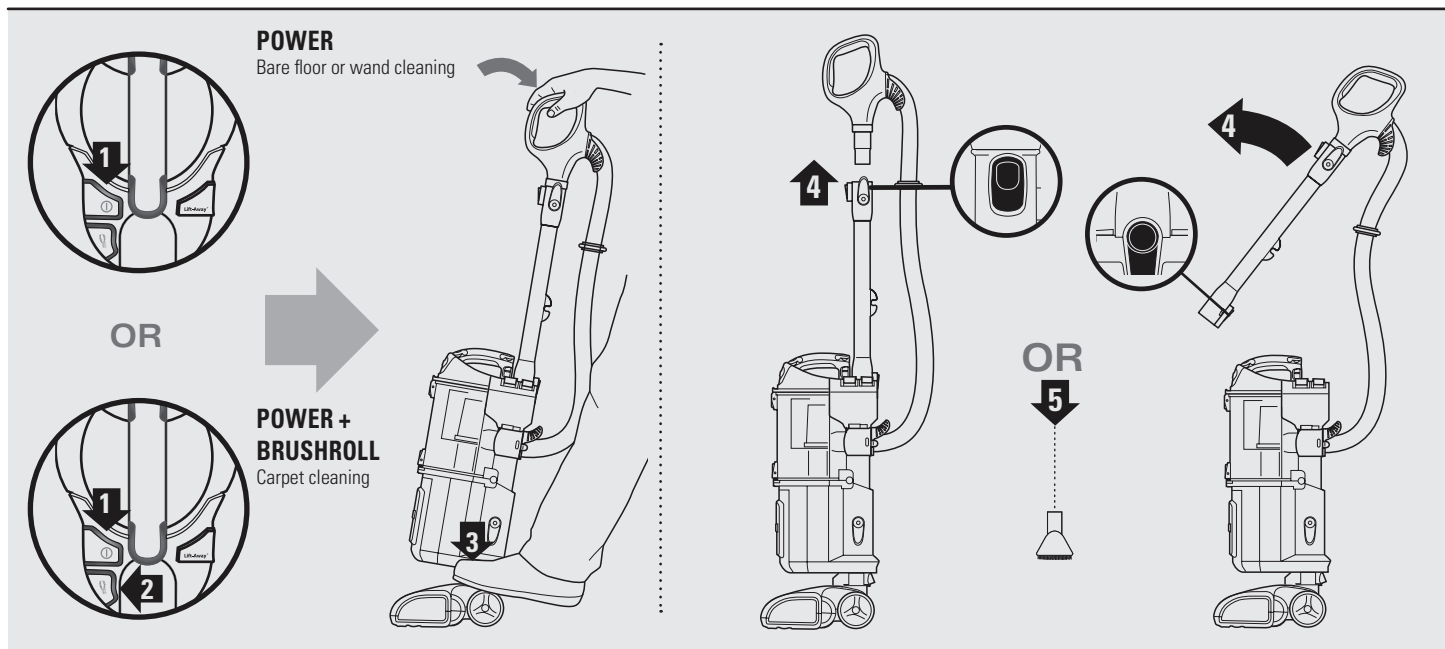


UPRIGHT CLEANING

- 1 Press POWER to clean bare floor surfaces, area rugs or areas above-floor. The brushroll will not spin in this mode.
- 2 Press POWER and BRUSHROLL to clean carpets. The brushroll indicator lights will illuminate GREEN. If there is a jam, the indicator light on floor nozzle will illuminate RED. Refer to MAINTENANCE (page 11) for instructions on removing blockages.
- 3 Place your left foot gently on the floor nozzle and tilt the handle back to start cleaning. Note: The brushroll will only spin once the vacuum is reclined back.

ABOVE FLOOR CLEANING

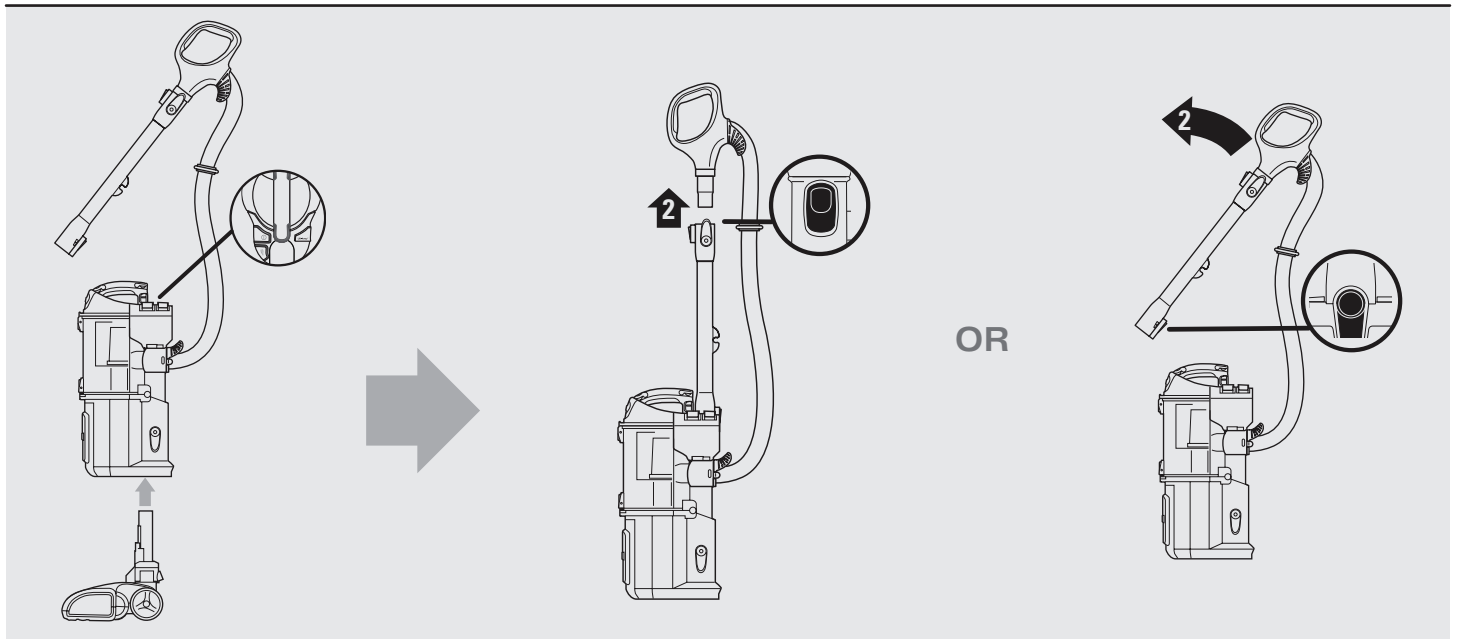
- 4 To clean with the hose, press the WAND or HANDLE release button (depending on the amount of reach required) then lift the handle up.
- 5 Attach desired cleaning accessory. Note, the handle will slide into the accessory and the wand will slide over the accessory.



LIFT-AWAY™ CLEANING

Use for portable
cleaning without
the wheels. Clean
floors, stairs or
anywhere with the
Lift-Away pod.

- 1 Press LIFT-AWAY to lift the pod off the floor nozzle.
- 2 To clean with the hose, press the WAND or HANDLE release button, then lift the handle up.



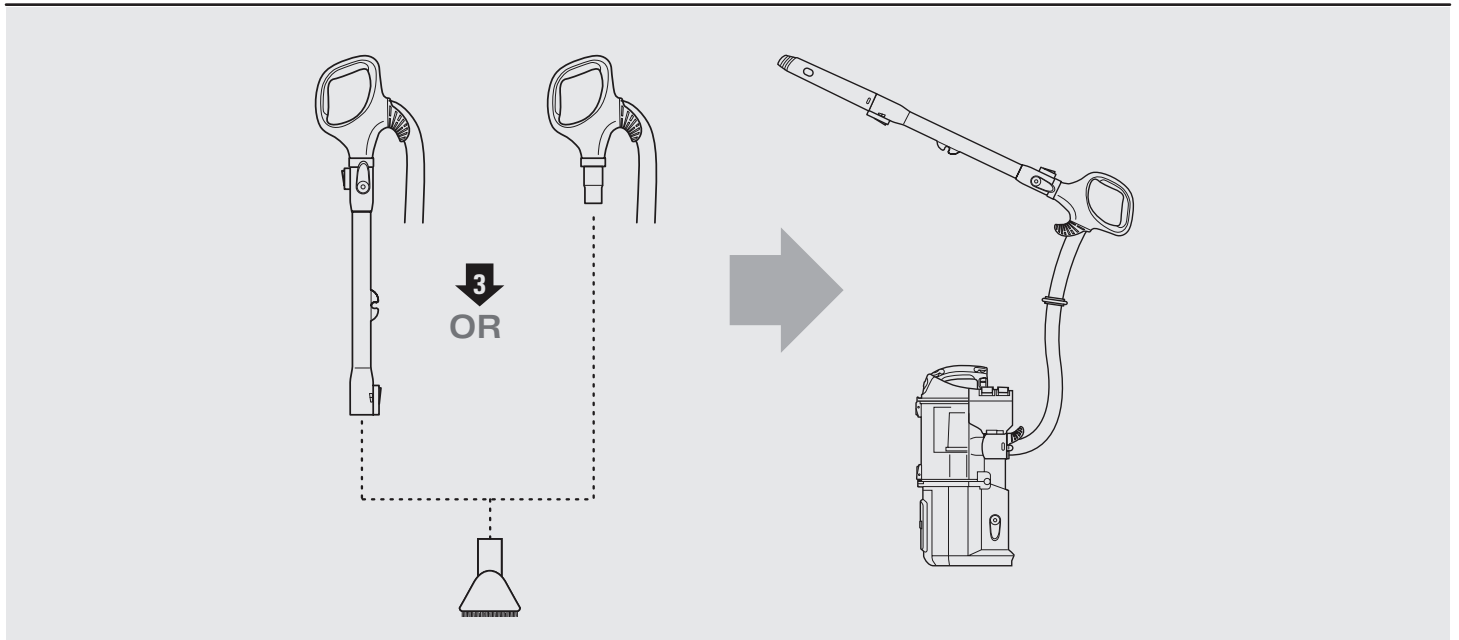
LIFT-AWAY™ CLEANING

Use for portable
cleaning without
the wheels. Clean
floors, stairs or
anywhere with the
Lift-Away pod.

- 3** Attach the desired cleaning tool. Should you need to increase or decrease the amount of suction, refer to Helpful Tips (page 9), SUCTION CONTROL.

NOTE: Select cleaning accessories are included with this model.

For a list of what is included with this model, refer to inside flap of box.



ACCESSORIES

3053FLI340

NOTE: Select cleaning accessories are included.

For a list of what is included with this model, refer to inside flap of box.

Dusting Brush

3050FC340

Cleans hard surfaces and upholstery.



HELPFUL TIPS

SUCTION CONTROL

- 1 This unit is equipped with a suction control collar to help with push and pull on high pile carpets, area rugs and to release suction when dusting delicate objects or drapery. Located at base of top handle, rotate the collar 90° to minimise suction. Be sure to close again for maximum suction.

POWER BUTTONS

- 2 The POWER button turns on suction only. This is ideal for use on bare floors, delicate area rugs and for use with accessories.
- 3 The BRUSHROLL button spins the floor brush, ideal for use on carpeted surfaces. Note: The floor brush will only spin once the vacuum is reclined back.

CORD HOOKS

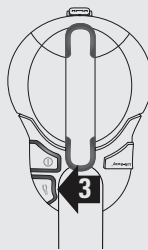
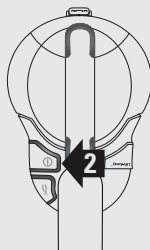
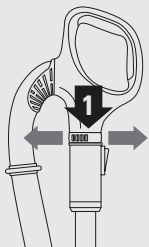
- 4 For quick cord access, rotate upper hook 180° and remove cord. Rotate it back for cord storage.

HEIGHT ADJUSTMENT

- 5 This floor nozzle has been optimised to work on all types of carpets as well as bare floors so there is never any need to adjust heights for different surfaces.

FILTERS

- 6 Remember to clean your filters regularly under normal use. Also, for optimal performance, tap clean filters between washes as needed.



MAINTENANCE

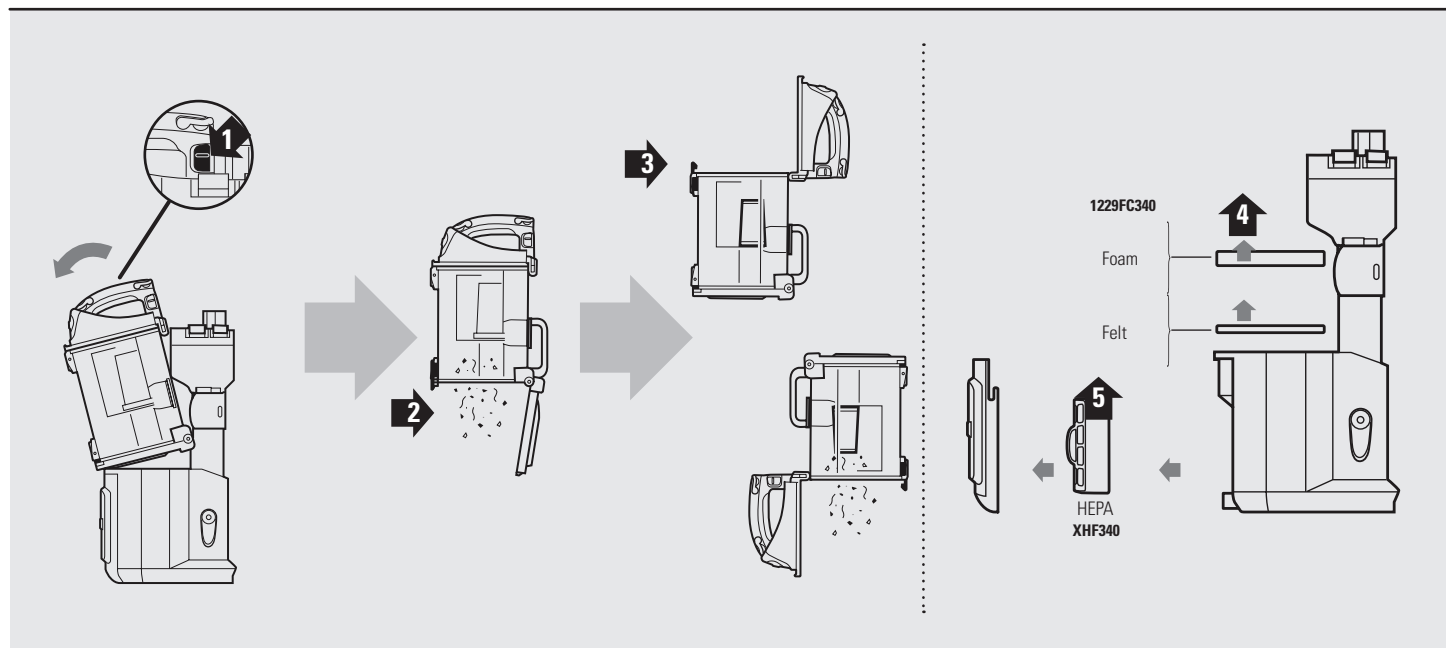
EMPTY THE DUST CUP

- 1 Pull up on the dust cup release latch and lift the dustcup off the pod.
- 2 Holding the dust cup over a garbage bag or can, press the bottom empty release latch.
- 3 Press the top dust cup release latch to access the dust screen and remove built-up debris as required. Turn the dust cup over and empty the upper chamber by holding it by the handle on the side of the dust cup.

CLEAN THE FILTERS

See cleaning schedule on page 2

- 4 With the dust cup detached, remove and rinse the foam and felt filters every three months. Hand wash only. Let air dry completely before replacing.
- 5 Once a year open the filter grill to remove and rinse the HEPA filter. Hand wash only. Let air dry completely before replacing.



MAINTENANCE

CHECK FOR BLOCKAGES

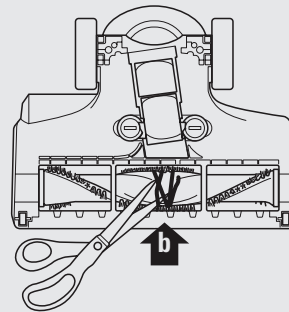
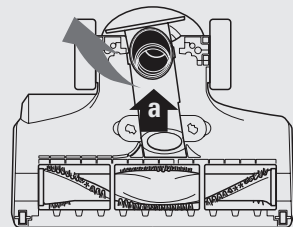
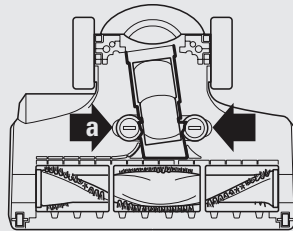
REMOVE AND INSPECT:

1 HOSE AND TUBES

Remove floor nozzle and extension wand and shine a flashlight up from the bottom to check for possible blockage. Remove dustcup and hose to check intake opening and hose elbow.

2 BOTTOM OF FLOOR NOZZLE

- a** Using a coin, turn the locking screws to the unlock position and pull up to expose the airway. Remove any obstructions, close and relock.
- b** Remove any string, carpet fibers or hair that may be wrapped around the brushroll.



TROUBLE- SHOOTING GUIDE

Vacuum is not picking up dirt. No suction or light suction

- Check filters to see if they need cleaning. Follow instructions for rinsing and drying the filters before re-inserting back into the vacuum.
- Dust cup may be full; empty dust cup.
- Check hose, hose connections, nozzles and accessories for blockages; clear blockages if required.
- Close the suction release on the handle to increase suction power.

Vacuum lifts area rugs

- Suction is powerful. Take care when vacuuming area rugs or rugs with delicately sewn edges. Open the suction release on the handle to decrease suction power.
- Turn off the unit to disengage the brush roll and restart with the POWER button for suction only cleaning.

Brush roll does not spin

- Pull the handle toward you and release the floor nozzle to disengage the auto-off feature.
- Turn the unit on by pressing the BRUSHROLL button.
- Immediately turn off and unplug vacuum, disconnect the nozzle and remove blockage before reconnecting and turning vacuum back on.

Vacuum turns off on its own

- This vacuum cleaner is equipped with a motor protective thermostat. If for some reason your vacuum overheats, the thermostat will automatically turn the unit off. Should this occur, perform the following steps to restart the motor thermostat:
 1. Turn the unit off.
 2. Unplug the vacuum.
 3. Empty the dust cup and clean filters.
 4. Check for blockages in hose, accessories and inlet openings.
 5. Allow the unit to cool for a minimum of 45 minutes.
 6. Plug in the vacuum.
 7. Restart the unit using either the POWER or POWER + BRUSHROLL buttons.

Note: If vacuum still does not start, contact Customer care at: AUST: 1800 890 840 or NZ: 0800 002 999.



[illegible]

NOTES



FIVE (5) YEAR LIMITED REPLACEMENT WARRANTY STATEMENT

If your product becomes defective due to faulty material or workmanship within a period of 5 years from the date of purchase, we warrant to do the following:

- **For New Zealand Consumers:** We will replace the product with a new product, free of charge, or repair the product at our cost, at our discretion.
- **For Australian Consumers:** Our goods come with guarantees that cannot be excluded under the Australian Consumer Law. You are entitled to a replacement or refund for a major failure and for compensation for any other reasonably foreseeable loss or damage. You are also entitled to have the goods repaired or replaced if the goods fail to be of acceptable quality and the failure does not amount to a major failure.

Your warranty is subject to the following conditions:

- **DO NOT** operate the appliance with a damaged plug or cord, or if the unit has been dropped, damaged or dropped in water. To avoid the risk of electric shock, do not disassemble or attempt to repair the appliance on your own. If the supply cord is damaged, **it must be replaced by a qualified electrician in order to avoid a hazard**. Incorrect re-assembly or repair can cause a risk of electrical shock or injury to persons when the appliance is used.
- The product has not been misused, abused, neglected, altered, modified or repaired by anyone.
- The product has been subjected to fair wear and tear.
- The product has not been used for trade, professional or hire purposes.
- The product has not sustained damage through foreign objects, substances or accident.

Your warranty does not cover:

- Components that are subject to natural wear and tear caused by normal use in accordance with operating instructions.
- Unauthorised/improper maintenance/handling or overload is excluded from this warranty.
- For guarantee claims you will need to submit a proof of purchase in the form of a valid receipt that displays date and place of purchase.

This warranty does not replace but is in addition to your statutory rights.

This warranty does not apply to accessories supplied with the product.

This warranty applies only to the original purchaser and may not be transferred.

Replacement products will be covered by the limited warranty for the balance of the warranty period from the date of the original purchase.

Please note:

Only defective product or parts returned to place of purchase will be replaced under this warranty.

New Zealand Contact:

Brand Developers Limited
Unit H, 686 Rosebank Road,
Avondale 1026, Auckland, New Zealand
FAX: +64 9 306 8203
NZ Customer Care 0800 002 999

Australia Contact

Brand Developers Aust Pty Ltd
461 Plummer Street,
PORT MELBOURNE, VIC 3207
FAX: +61 3 9681 7825
AUST Customer Care: 1800 890 840



Shark®

Distributed by:

Brand Developers Aust Pty Ltd

461 Plummer Street
PORT MELBOURNE, VIC 3207
FAX: +61 3 9681 7825
AUST Customer Care: 1800 890 840



Brand Developers Ltd

Unit H, 686 Rosebank Road,
Avondale, 1026 Auckland,
NEW ZEALAND
FAX: +64 9 306 8203
NZ Customer Care: 0800 002 999



GMA-102233-EA-007